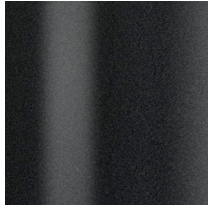


ELITE
M O D E R N

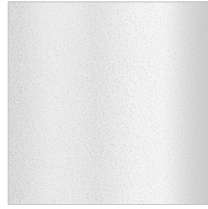
METAL



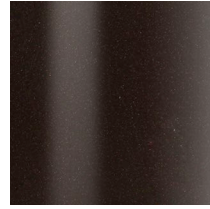
Topaz



Onyx



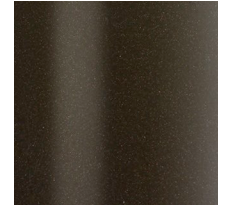
Pearl White



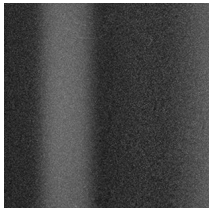
Bronze



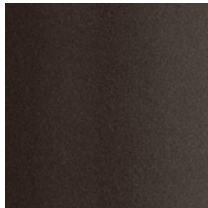
Patina



Toffee



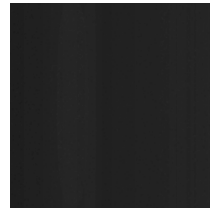
Pewter



Lava



Mink



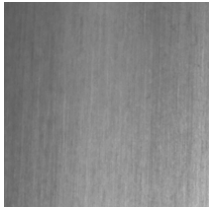
Carbon



Sahara

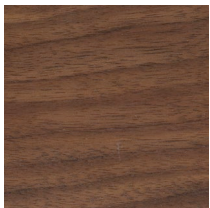


Mist

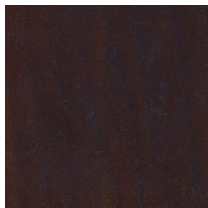


Champagne
(selected items)

WOOD Walnut Veneer



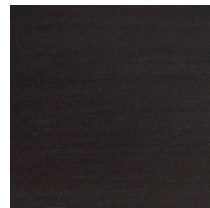
Natural



Java

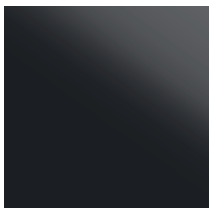


Smoke Grey



Ebony

GLASS Acid-etched

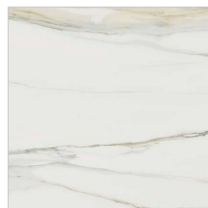


Caviar



Sable

CERAMIC



Calacatta Gold



Outback (PVC) Grade 1

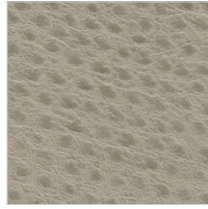
100,000 double rubs



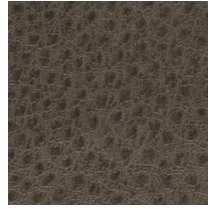
Alabaster



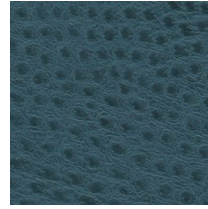
Flax



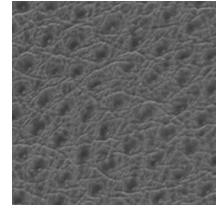
Cement



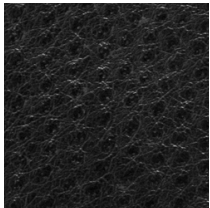
Cobblestone



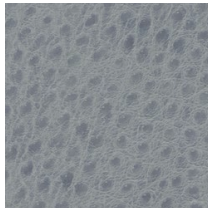
Baltic



Quartz



Coal



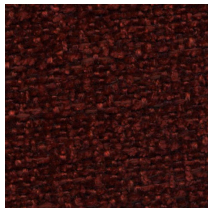
Glaze

Samson (fabric) Grade 1

50,000 double rubs



Char



Crimson



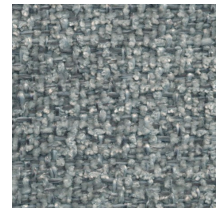
Fawn



Navy



Russet



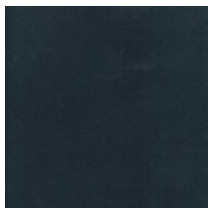
Sleet

Prestige (fabric) Grade 1

100,000 double rubs



Sage



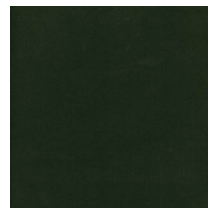
Slate



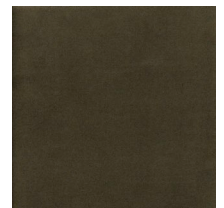
Mustard



Camel



Forest



Greystone



Congo (PVC) Sta-Kleen Grade 2

200,000 double rubs



Glacier



Granite



Indigo



Lead

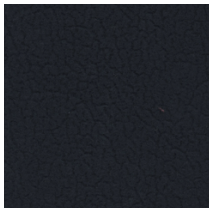


Portabello

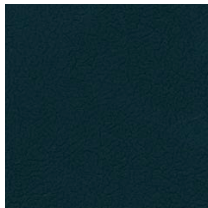
CONGO is not available on all items due to the limited flexibility of the vinyl, see price list for restrictions.

Splendid (fabric) Grade 2

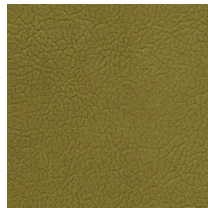
200,000 double rubs



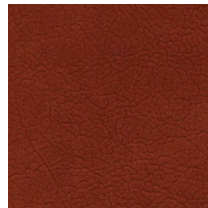
Midnight



Lagoon



Pear



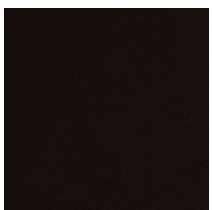
Cinnabar



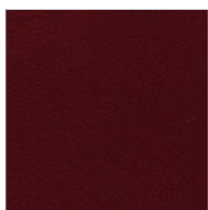
Almond



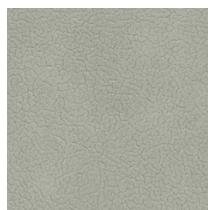
Posh



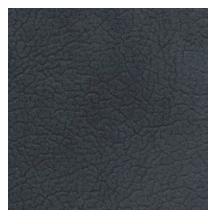
Brownstone



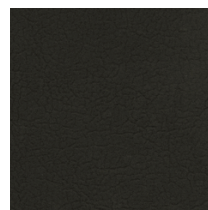
Pomegranate



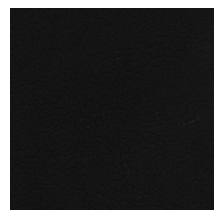
Quicksilver



Chambray



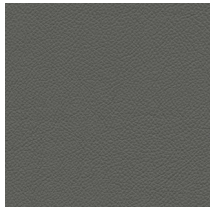
Seal



Peppercorn



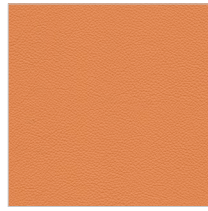
Zenith (leather) Grade 3



Accialo



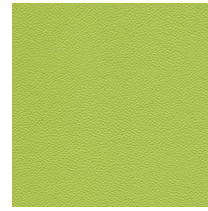
Ananas



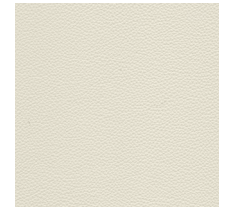
Arancio



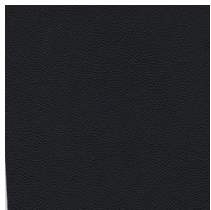
Bianco



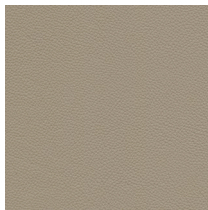
Chartreuse



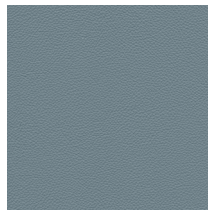
Ecrú



Nero



Pietra



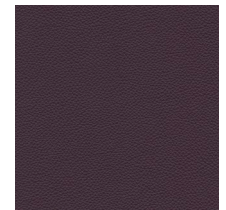
Piombo



Rosso



Umber



Viola

Grade 4

ultrasuede®

Please note that Elite does not stock Ultrasuede, orders take an additional week to complete. Click on the logo to view the current color choices and to order samples of Ultrasuede.