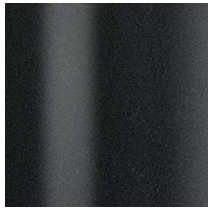




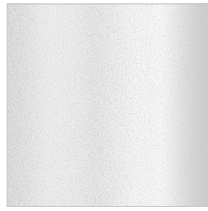
## METAL



Topaz



Onyx



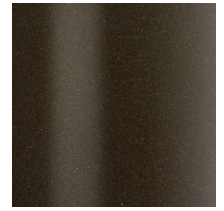
Pearl White



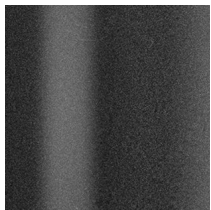
Bronze



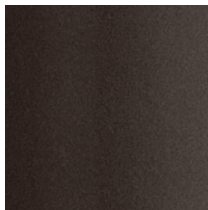
Patina



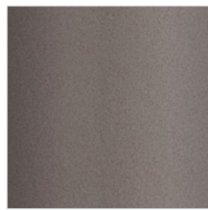
Toffee



Pewter



Lava



Mink



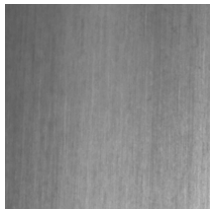
Carbon



Sahara

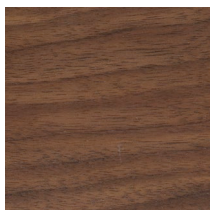


Mist

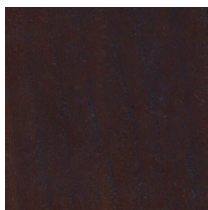


Champagne  
(selected items)

## WOOD Walnut Veneer



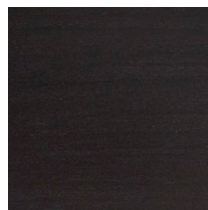
Natural



Java



Smoke Grey



Ebony

## GLASS Acid-etched

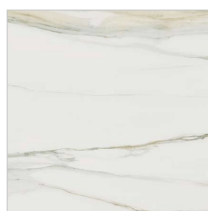


Caviar



Sable

## CERAMIC



Calacatta Gold



Outback (PVC) Grade 1

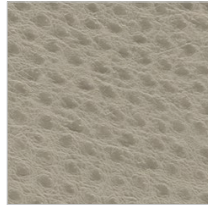
100,000 double rubs



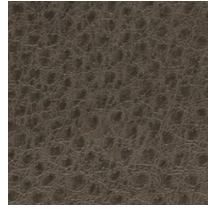
Alabaster



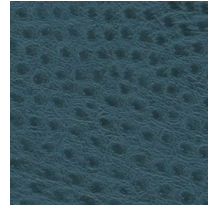
Flax



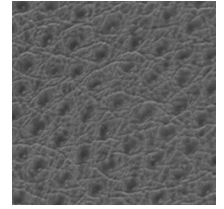
Cement



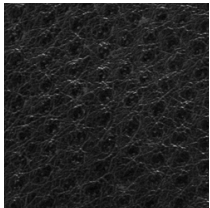
Cobblestone



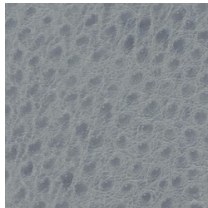
Baltic



Quartz



Coal



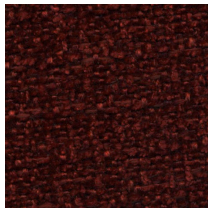
Glaze

Samson (fabric) Grade 1

50,000 double rubs



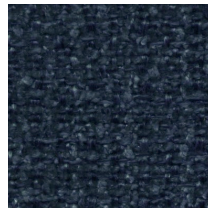
Char



Crimson



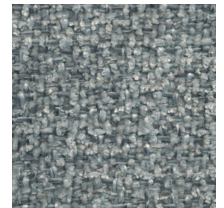
Fawn



Navy



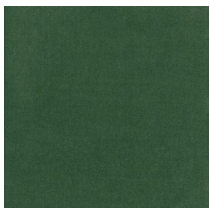
Russet



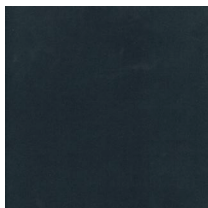
Sleet

Prestige (fabric) Grade 1

100,000 double rubs



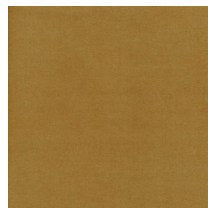
Sage



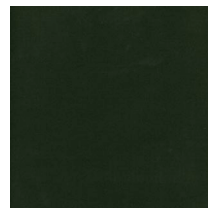
Slate



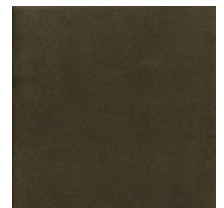
Mustard



Camel



Forest



Greystone



## Congo (PVC) Sta-Kleen Grade 2

200,000 double rubs



Glacier



Granite



Indigo



Lead

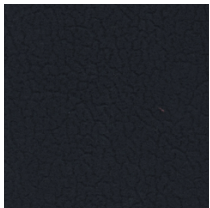


Portabello

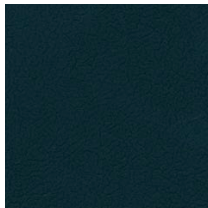
CONGO is not available on all items due to the limited flexibility of the vinyl, see price list for restrictions.

## Splendid (fabric) Grade 2

200,000 double rubs



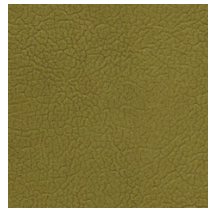
Midnight



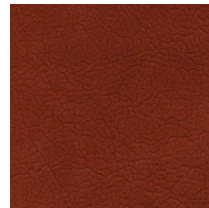
Lagoon



Whisper



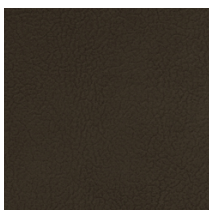
Pear



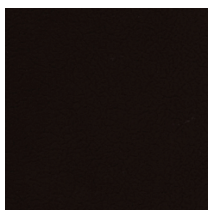
Cinnabar



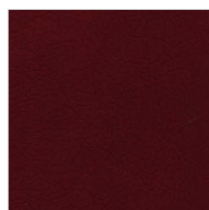
Almond



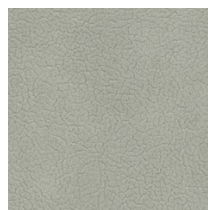
Posh



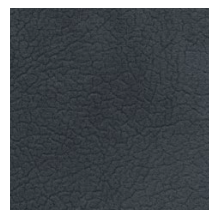
Brownstone



Pomegranate



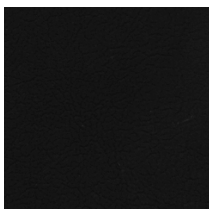
Quicksilver



Chambray



Seal

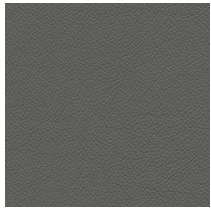


Peppercorn





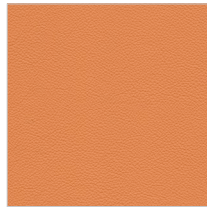
### Zenith (leather) Grade 3



Acciao



Ananas



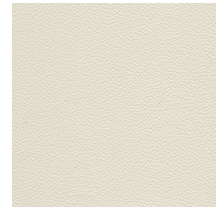
Arancio



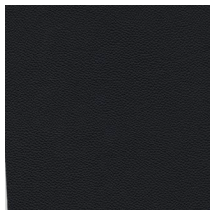
Bianco



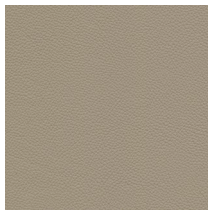
Chartreuse



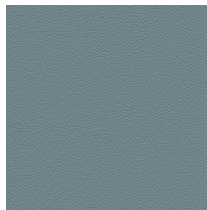
Ecrú



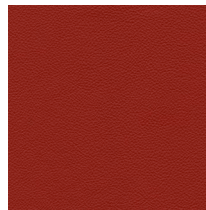
Nero



Pietra



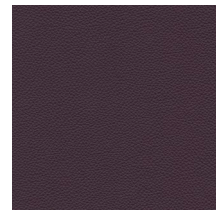
Piombo



Rosso



Umber



Viola

### Grade 4

**ultrasuede®**

Please note that Elite does not stock Ultrasuede, orders take an additional week to complete.  
Click on the logo to view the current color choices and to order samples of Ultrasuede.